

BLEX-004

BLEX-004 is perfect for where recessed lighting is not an option. It can help and set the mood of each room in homes, offices and retail stores, creating a particular modern flare.

Supplied as standard in 1m or 2m lengths. We also offer cut-to-length option, further saving time and effort.

Contact our lighting specialist for more information! Samples available upon request.

Features

- Easy to cut to size or extend as needed
 - Good heatsinking for LED longevity
 - Fitting colour can be customised*
- *may be subject to minimum order quantities

Accessories

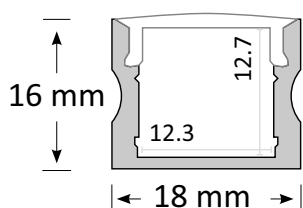


- 2 Poly end caps per standard length
- Diffuser - Frosted/Semi-clear/Clear
- 2 Mounting brackets per standard length

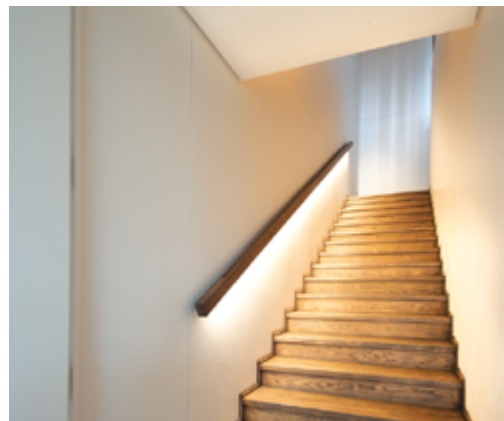
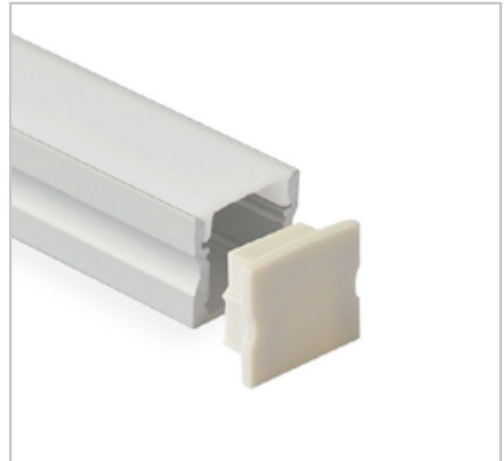
Product Specifications

IP Rating	20
Dimensions (mm)	1000*18*16
Cut Out (mm)	-
Weight (kg)	0.5
Warranty (yrs)	3

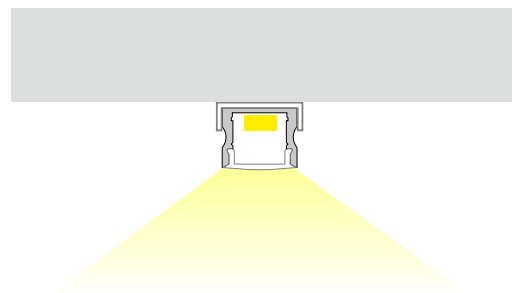
Product Dimensions



Extrusion 004



Installation Instruction



Extrusion can be mounted to benches, cabinets, shelves or furniture with the use of Velcro tape or mounting bracket.

It can be fitted with one BoscoLighting SMD5050 or SMD3528 LED strip for interior lighting.

*LEDs and driver not included.