

BLEX-023-R

BLEX-023-R with LED strip light is mostly used as wall light in interior lighting projects. It helps dissipate heat for maintaining LED performance while also protecting the LED lights.

Supplied as standard in 1m or 2m lengths. We also offer cut-to-length option, further saving time and effort.

Contact our lighting specialist for more information!

Features

- Easy to cut to size or extend as needed
 - Good heatsinking for LED longevity
 - Fitting colour can be customised*
- *may be subject to minimum order quantities



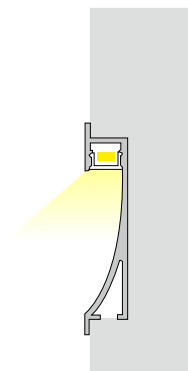
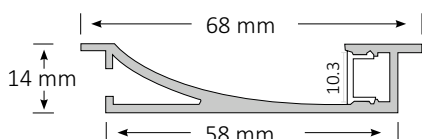
Accessories

- 2 Poly end caps per standard length
- Diffuser - Frosted

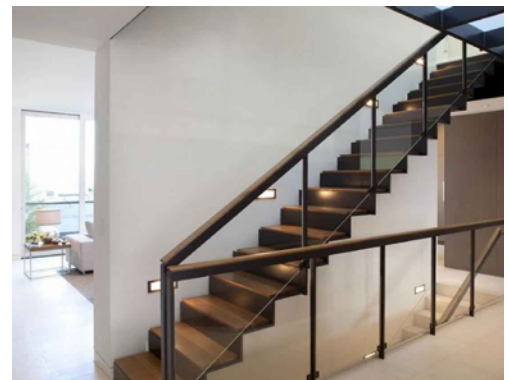
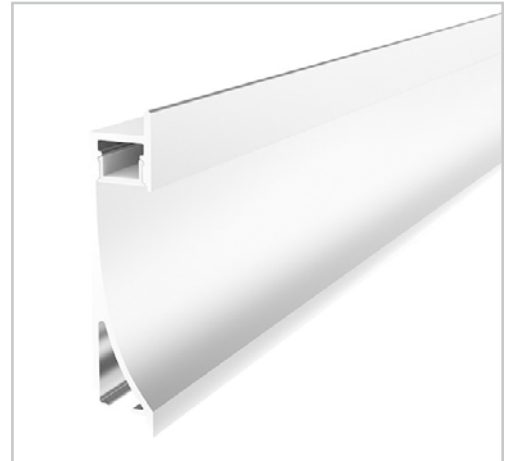
Product Specifications

IP Rating	20
Dimensions (mm)	1000*68*14
Cut Out (mm)	1000*58
Weight (kg)	0.5
Warranty (yrs)	3

Product Dimensions



Extrusion 023-R



Installation Instruction

Extrusion can be recessed into benches, cabinets, shelves or furniture.

It can be fitted with one BoscoLighting SMD3528 LED strip for interior lighting.

*LEDs and driver not included.