

## BLEX-063



BLEX-063 is a narrow rectangular extrusion designed to accommodate multiple LED strips with massive light output. Perfect for architectural and commercial linear applications. This is definitely a product that adds value to your or your client's latest project.

Supplied as standard in 1m or 2m lengths. The high quality aluminium extrusion can be cut to length as your require.

Contact our lighting specialist for more information!

## Features

- Easy to cut to size or extend as needed
- Good heatsinking for LED longevity
- Fitting colour can be customised\*

\*may be subject to minimum order quantities

## Accessories

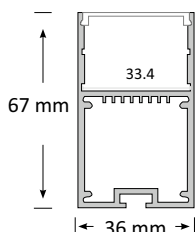


- 2 Metal end caps per standard length
- Diffuser -Frosted/Semi-clear
- Suspension Kit (Pair) -Optional per request

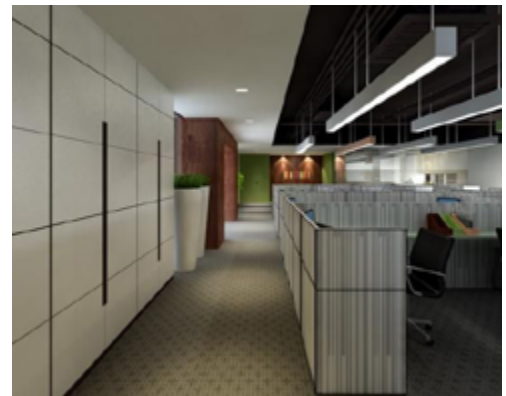
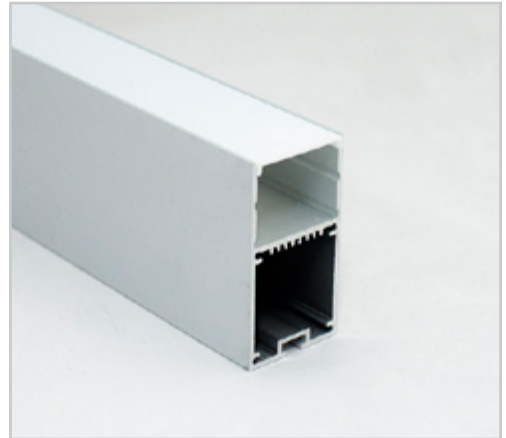
## Product Specifications

|                 |            |
|-----------------|------------|
| IP Rating       | 20         |
| Dimensions (mm) | 1000*36*67 |
| Weight (kg)     | 1          |
| Warranty (yrs)  | 3          |

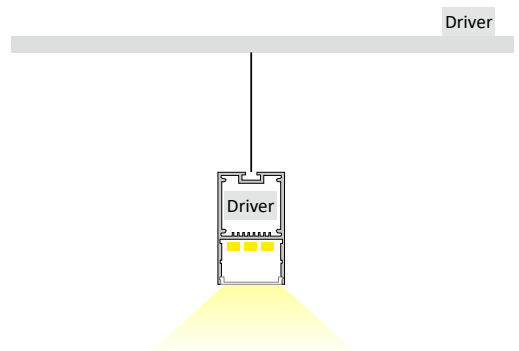
## Product Dimensions



## Extrusion 063



## Installation Instruction



Extrusion can work as a pendant for over desk or bench top applications with the use of suspension kits.

This extrusion can accommodate several BoscoLighting SMD5050 or SMD3528 strips for maximum illumination.

Place drivers inside the upper section of the extrusion, otherwise, place it remotely.

\*LEDs and driver not included.