

BLEX-103

BLEX-103 is a linear LED pendant fitting or can work as surface mounted luminaire with dual light sources capability. Housing with LED strip lights, the profile maintains high efficiency by distributing light over the vaulted interior cavity of the fitting. It is perfect for offices, conference rooms or even learning spaces as indirect lighting minimizes glare on shiny screens, creating a more natural and soothing setting.

Supplied as standard in 1m or 2m lengths. The high quality aluminium extrusion can be cut to length as your require.

Features

- Easy to cut to size or extend as needed
 - Good heatsinking for LED longevity
 - Fitting colour can be customised*
- *may be subject to minimum order quantities

Accessories

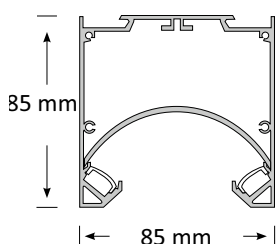


- 2 Metal end caps per standard length
- Diffuser -Frosted/Semi-clear/Clear
- 2 Mounting brackets/ Suspension Kit (Pair)
-Optional per request

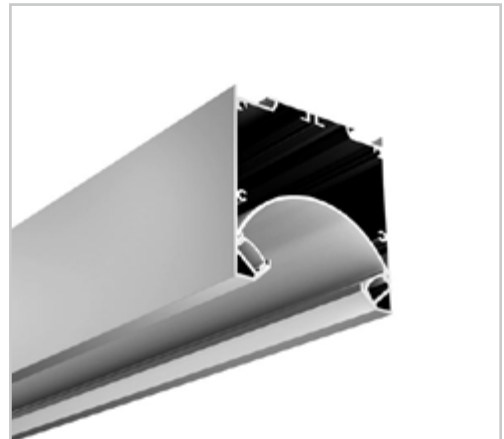
Product Specifications

IP Rating	20
Dimensions (mm)	1000*85*85
Weight (kg)	1.5
Warranty (yrs)	3

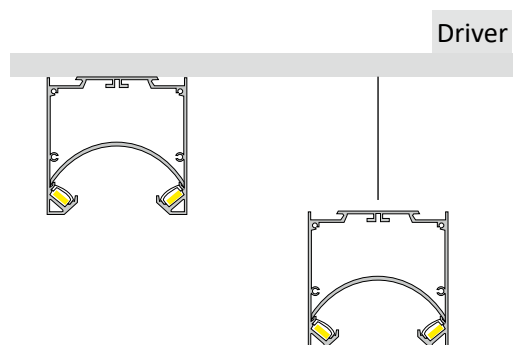
Product Dimensions



Extrusion 103



Installation Instruction



Extrusion is suitable for surface mounted and suspended applications, where limited glare is a requirement.

This extrusion can accommodate two BoscoLighting SMD5050 or SMD3528 strips for maximum illumination.

Place drivers inside the upper section of the extrusion, otherwise, place it remotely.

*LEDs and driver not included.