

BLEX-TL008

With BLEX-TL008, you can achieve a continuous, soft wash of indirect light that gracefully spreads across the ceiling, instantly breathing life into even the duller rooms.

Supplied in convenient 2-meter lengths, the BLEX-TL008 boasts high-quality aluminum extrusion that can be easily tailored to your specific needs by cutting to custom lengths (subject to MOQ requirements).

The default fitting color in Powder Coated White ensures seamless integration into any interior, blending effortlessly with your décor.

Features

- Easy to cut to size or extend as needed
- Good heatsinking for LED longevity
- Default fitting colour: powder coated white

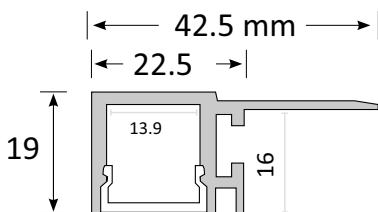
Accessories

- 2 Poly End Caps per standard length
- Diffuser - Frosted
- Optional Joiner on request

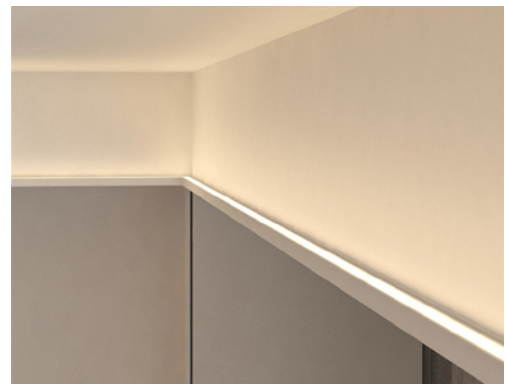
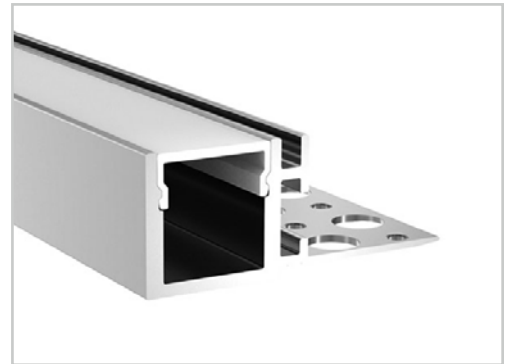
Product Specifications

IP Rating	20
Dimensions (mm)	1000*42.5*18
Cut Out (mm)	-
Weight (kg)	0.5
Warranty (yrs)	3

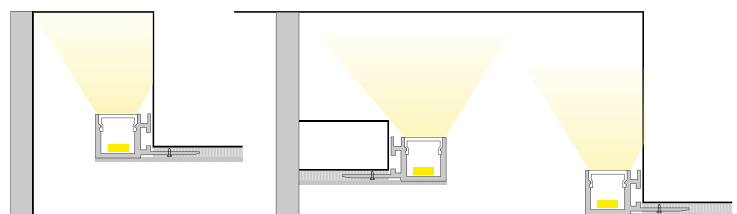
Product Dimensions



Plaster-in Trimless Extrusion TL008



Installation Instruction



*LEDs and driver not included.