

BLEX-TL019

BLEX-TL019 is a plaster-in trimless extrusion with semi circular diffuser protruded. With a light emitting surface of approx 23mm wide, the profile is designed to deliver dot free illumination.

Supplied as standard in 2m lengths. The high quality aluminium extrusion can be recessed easily into walls or ceilings using a thin layer of plaster. We offer cut-to-length service as well. (MOQ may apply)

Contact our lighting specialist for more information!

Features

- Easy to cut to size or extend as needed
- Good heatsinking for LED longevity
- Recommended Installation: Recessed in minimum 7 mm Plasterboard or Gyprock.

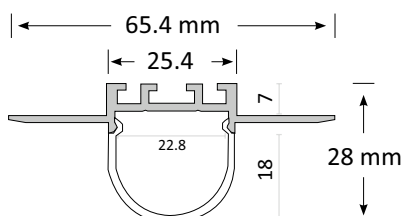
Accessories

- 2 Plastic End Caps per standard length
- Diffuser - Frosted
- Optional Joiner on request

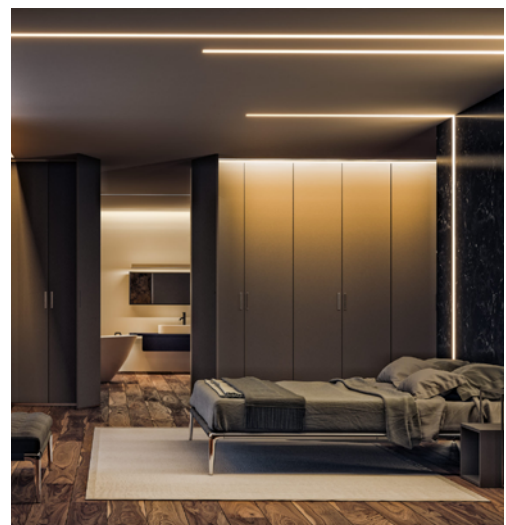
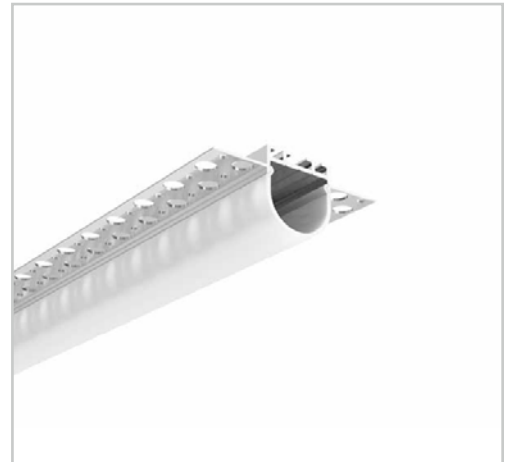
Product Specifications

IP Rating	20
Dimensions (mm)	1000*65.4*28
Cut Out (mm)	1000*26*7
Weight (kg)	0.5
Warranty (yrs)	3

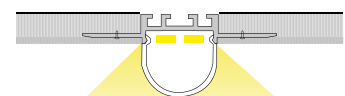
Product Dimensions



Plaster-in Trimless Extrusion TL019



Installation Instruction



It can be fitted with one or two BoscoLighting SMD5050, SMD2835, SMD3528 LED strip for interior lighting.

*LEDs and driver not included.