

BLEX-TL020

BLEX-TL020 vaulted extrusion is designed to be mounted on plasterboard ceilings (depth 13mm). This profile distributes light over the vaulted interior cavity of the fitting, providing a continuous line of indirect light. It can deliver any room with a glare-free and indirect lighting system that makes any space appear more striking.

The wall wash lighting system is great for both commercial and household use. Supplied as standard in 2m lengths, this high quality aluminium extrusion can be cut to length as your require.

It can be fitted with two BoscoLighting SMD2835, SMD5050, SMD3528 or other LED strips for interior lighting.

*LEDs and driver not included.

Features

- Easy to cut to size or extend as needed
- Good heatsinking for LED longevity
- Default fitting colour: powder coated white

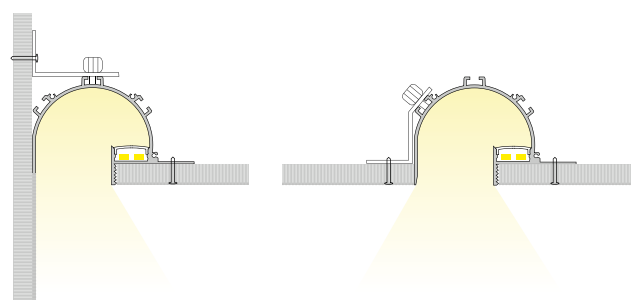
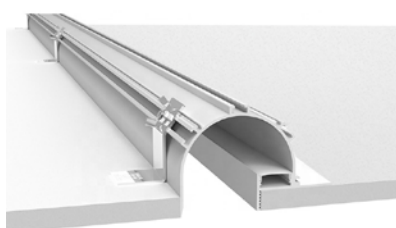
Accessories

- 2 Metal End Caps per standard length
- Diffuser - Frosted
- Optional Joiner on request

Product Specifications

Dimensions (mm): 1000*101*67.8

Installation Instruction



Plaster-in Trimless Extrusion TL020

